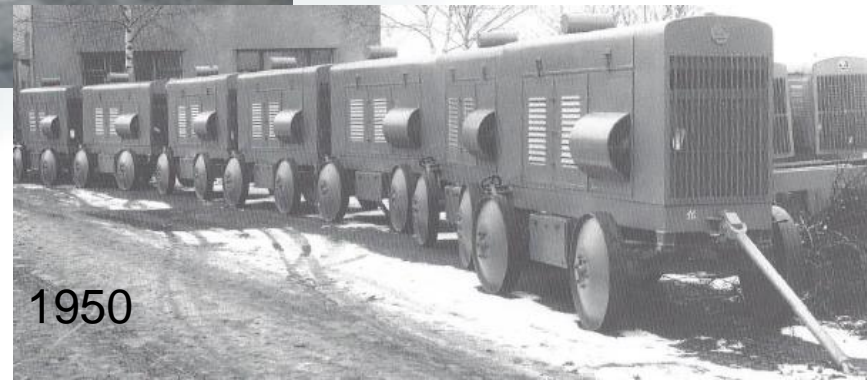




Atmos mobile compressors 2022

Company history

- Atmos was founded in 1899 as a foundry and machine plant.
- In 1948 the factory was nationalized and incorporated into the Skoda Group



Company history

- The ATMOS piston mobile compressors production was established in 1950
- In total more than 75.000 mobile compressors were produced



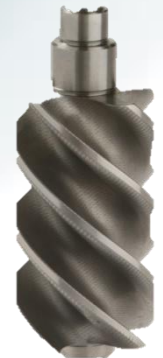
Teheran 1955

Cairo 1982



Company history

- The licensed serial screw air end production in co-operation with Rotorcomp Germany started in 1987
- Privatisation in 1992, and development of the new range of portable and stationary screw compressors
- 2007 – 2013 cooperation with IR for producing portable compressors



Atmos air ends

In-house production of 3 sizes:

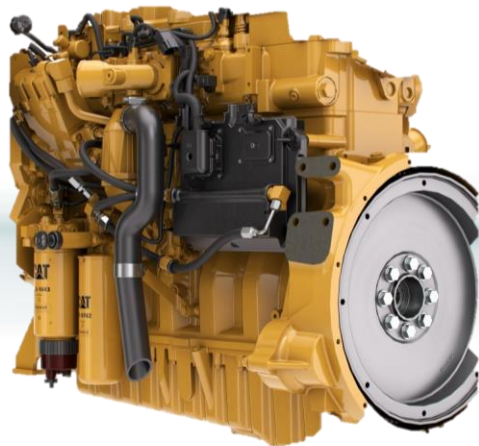
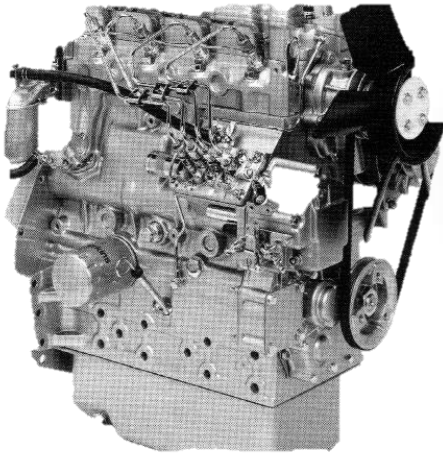
B100 – 4 – 30 kW

B100L – 7,5 – 37 kW

A150 – 30 – 55 kW



Engines from 12.5 up to 205 kW



Non CE machines vs CE marked machines

- CE mark was developed only for EU countries
- CE machines and non CE machines are the same quality.
- CE marked machines have to fulfill EU standards (noise, exhaust emission, safety)
- CE marked machines has to be equipped with features required by EU.
- CE machines and non CE machines compression parts are identical.
- Non CE marked machines are cheaper due to simpler construction.
- Non CE marked machines can be more reliable due to simpler construction.

EU origin machines

- Made in EU.
- Designed in EU.
- EU quality for non european markets = non CE machines.
- Atmos produces and supplies both non CE and CE certified machines too.
- All of them are EU origin.

Overview

Parameter	Fuel	Engine	Power	Max flow	Max pressure	CE	non CE
Machine			(kW)	(m3/min)	(barg)		
PB81	gasoline	Wanguard	12,5	1,4/ 1,1/ 0,7	6/ 10/ 14		•
PB82	gasoline	Wanguard	16,9	1	14		•
PB82E	gasoline	Wanguard	16,9	1,4/ 1,1/ 0,7	6/ 10/ 14	•	
PDP15	diesel	Perkins	15,3	2	7	•	•
PDP20	diesel	Perkins	18,9	2,9/ 2,5	7/ 10	•	•
PDK33	diesel	Kubota	33	5/ 3,8/ 3,2	7/ 10/ 12		•
PDP35	diesel	Perkins	35,7	5/ 4/ 3,2	7/ 10/ 12	•	•
PDK65	diesel	Kubota	54,5	7/ 6,3/ 5,8	7/ 10/ 12		•
PDP65	diesel	Perkins	82	7/ 6,3/ 5,8/ 4,5	7/ 10/ 12/ 14		•
PDP95	diesel	Perkins	82	11/ 9,8/ 8,8	7/ 10/ 12		•
PDH76	diesel	Hatz	54,5	7,6/ 6,5/ 5,9/ 5,5	7/ 10 / 12/ 14	•	
PDP190	diesel	Perkins	186	24.8 / 21.3 / 19 / 17.2	8.6 / 10 / 12 / 14		•
PDC90	diesel	CAT	98,1	12/ 10/ 8,8/ 7,8	7/ 10/ 12/ 14	•	
PDC190	diesel	CAT	205	25.2/ 24.8/ 22.1/ 19.9	8.6 / 10 / 12 / 14	•	

PB81 non CE

- Vanguard 3 cylinders gasoline engine 12.5 kW,
- Full load speed: 3600 min.–1
- F.A.D.: 1.4/ 1,1/ 0,7 m³/min @ 6/ 10/ 14 bar
- Rotorcomp airend
- Weight only 135 kg
- Manual start as a standard, electric optionally
- Developed in cooperation with cable blowers producers
- Application – hammer (1pc), blowing of Optic cables, underground rocket
- Competitors – Kaeser M17, Compair C14



PB82 (E)

CE and non CE

- Vanguard 3 cylinders gasoline engine 16.9 kW
- Full load speed: 2500 min.–1 (non CE version 3600 min.–1)
- F.A.D. : 1.4/ 1.1/ 0.7 m³/min @ 6/ 10/ 14 bar
- (non CE version 1.0 m³/min @ 14 bar)
- Rotorcomp airend
- Electric start as a standard
- Developed in cooperation with cable blowers producers
- Application – hammer (1pc), blowing of Optic cables, underground rocket
- Competitors – Kaeser M17, Compair C14



PDP15

CE and non CE

- Perkins 403D-07 - 3 cylinders 676 ccm diesel driven engine 15.3 kW
- Full load speed: 3600 min.—1
- F.A.D.: 2.0 m³/min @ 7 BAR
- Atmos B100 airend
- Application – up to 40 kg hammer blowing of optic cables, dry ice blasting
- Competitor: Atlas Copco XAS 38Kd



PDP20

CE and non CE

- Perkins 403J-11- 3 cylinders 1131 ccm diesel driven engine 18.9 kW
- Full load speed: 3400 min.-1
- F.A.D.: 2.9/ 2.5 m³/min @ 7/ 10 bar (dual pressure)
- Atmos B100 airend
- Application – up to 40 kg hammer, blowing of optic cables, dry ice blasting, underground rocket
- Competitor - Atlas Copco XAS 58Kd



PDK 33 non CE

- Kubota V1505 4 cylinders diesel driven engine 33 kW
- Full load speed: 3000 min.-1
- F.A.D.: 5/ 3,8/ 3,2 m³/min @ 7/ 10/ 12 BAR
- Certified for using in hot ambient environment up to 55°C
- Atmos B100 airend
- Application: hammer, blowing of optic cables, dry ice blasting, dust cleaning



PDP35

CE and non CE

- Perkins 404D – 22, 35.7 kW, 4 cylinders diesel driven engine 2216 ccm
- Full load speed: 2600 min.–1
- F.A.D.: 5 / 4 / 3.2 m³/min @ 7/ 10/ 12 BAR
- Atmos B100L air end
- Competitor -Atlas Copco XAS 87 Kd





PDK 65_{non CE}

- Certified for hot ambient temperature up to 60°C
- F.A.D.: 7/ 6.3/ 5.8 m³ / min @ 7/ 10/ 12 BAR
- Kubota engine V3300, 54,5 kW/2.600 rpm
- Price oriented solution of canopy (noise level)
- Small and compact dimensions
- Atmos A150 airend
- Application: hammer, blowing of optic cables, dry ice blasting, dust cleaning
- Competitor - Atlas Copco XAS 127Kd



PDP 65 non CE

- Perkins 1104A-44T 4 cylinders diesel driven engine 4400 ccm - 82 kW
- Full load speed: 2000 min.-1 (low noise level)
- F.A.D.: 7/ 6,3/ 5,8/ 4,5 m³/min @ 7/ 10/ 12/ 14 BAR
- Air end: Rotorcomp / Germany EVO9
- Available option: Dual pressure version (7 or 10 bar)
- Very heavy duty machine with huge power reserve
- Application: hammer, blowing of optic cables, dry ice blasting, dust cleaning, soda blasting
- Competitor - Atlas Copco XAS 127Kd



PDP 95 non CE

- Certified for hot ambient temperature up to 46°C
- Perkins 1104A-44T 4 cylinders diesel driven engine 82 kW
- Full load speed: 2400 min.-1
- F.A.D.: 11/ 9.8/ 8.8 m³/min @ 7/ 10/ 12 BAR
- Termomeccanica SCA14 airend
- Applications: Cable blowing, blasting, oil & gas app., pipes testing, drilling, dry ice blasting etc.
- Competitor - Atlas Copco XAS 186Kd



PDH 76

CE certified

- Hatz 4H50 TICD5 diesel driven engine 54,5 kW
- Full load speed: 2300 min.-1
- Free air delivery: 7,6/ 6,5/ 5,9/ 5,5 m³/min @ 7/ 10 / 12/ 14 bar
- CE Stage 5
- Competitor - Atlas Copco XAS 138

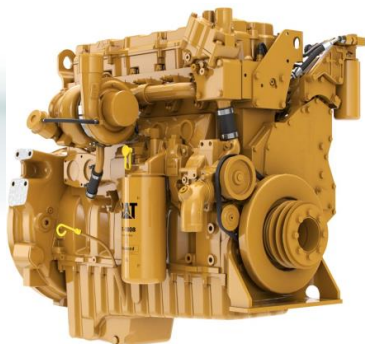


PDP 190 non CE

- Very robust machine
- High ambient temperature capabilities
- Engine: Perkins 1106D-E66TA, 186 KW
- F.A.D.: 24.8 / 21.3 / 19 / 17.2 m³/min @ 8.6 / 10 / 12 / 14 bar
- Termomeccanica airend, ComAp controller
- Application: drilling, sand blasting, oil & gas
- Competitor – Atlas Copco XAMS 407



PDC 90 CE certified



- Compressor for EU markets with Caterpillar constant speed engine
- F.A.D.: 12/ 10/ 8.8/ 7.8 m³/min @ 7/ 10/ 12/ 14 BAR
- CAT engine C4.4 Constant Speed, 98.1 kW/1.800 rpm
- Massive price advantage in comparison to standard TIER4 machines, up to 40%.
- Simple and robust design. less electronics, less chances for failures
- Reduced maintenance costs because no particle filter is needed
- Higher availability on construction sites because no Ad Blue additive is needed



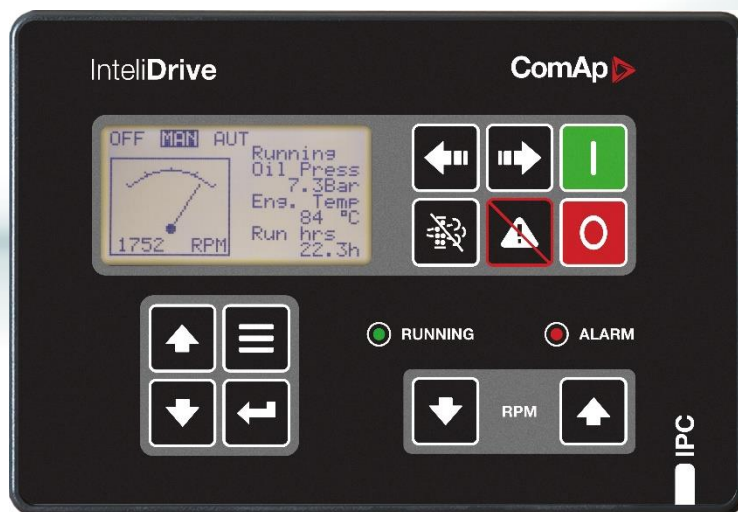
PDC 190 CE certified

- New compressor for EU markets with Caterpillar constant speed engine
- F.A.D.: 25.2/ 24.8/ 22.1/ 19.9 m³/min
- @ 8.6 / 10 / 12 / 14 BAR
- CAT engine C7.1 Const. Speed, 205 kW/1.800 rpm
- Massive price advantage in comparison to standard up to 40%.
- Reduced weight, even 25 m³ machine can be towed by car (< 3.500 kg), no ABS necessary.
- Reduced maintenance costs because no particle filter is needed
- Higher availability on construction sites because no Ad Blue additive is needed
- Competitor Atlas Copco XAMS 527



New controller

- New control system for machines over 33 kW
- More simple, user friendly and powerful
- Integrated hour counter, engine protection at start, record faults
- Enabling programming of the engine pre-glow period depending on ambient temps
- Depressurised startup for longer engine lifetime



ARGUMENTS

- Automotive standards painting/evidence/quality check
- Easy operation
- Low fuel consumption
- Full EC road homologation
- Genuine original parts
- Ambient operations up to -40 degrees Celsius
- Bad fuel resistant engines

RELIABILITY

- Components from European known producers
- ATMOS original own manufactured air-ends
- ATMOS original own engineering and design
- No China manufactured parts
- Worldwide ATMOS support



Most frequent options

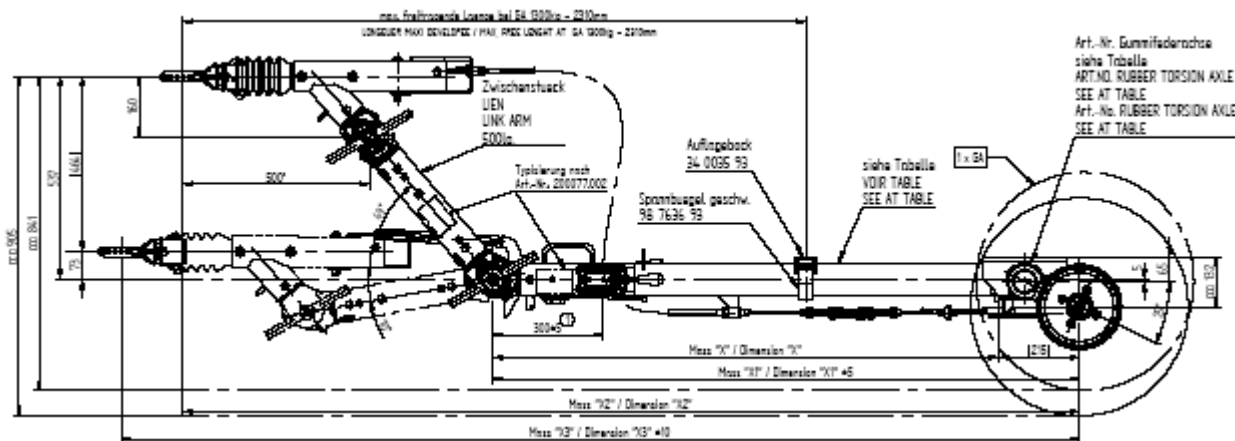
- Independent preheater of machines
- Minimum pressure valve
- Accumulator disconnect
- Water separator (on regulation air)
- External fuel connector
- Aftercooler with condensate evaporator

UNDERCARRIAGES

KNOTT®

- Fix tow bar unbroken
- Fix tow bar broken
- Adjustable tow bar unbroken
- Adjustable tow bar broken

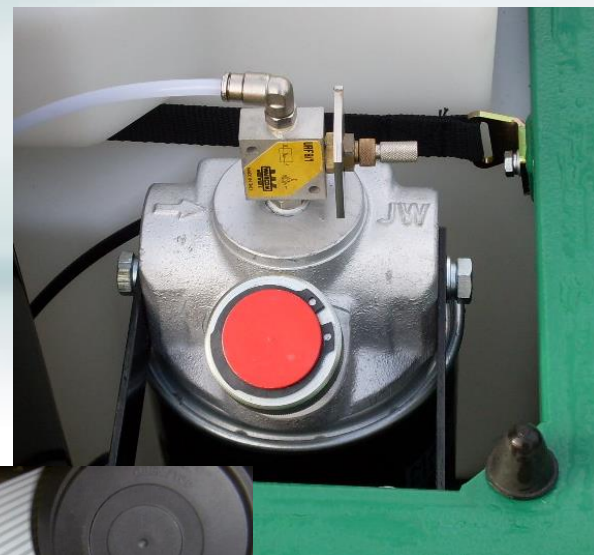
750 kg



OPTIONS



- Tool lubricator
- Aftercooler with condensate drain
- Heat exchanger
- Microfilters for oil-free air (ZTV-SIB)
- Breathing air filter
- Diesel particle filter
- Hose reel
- Spark arrestor
- Chalwyn valve
- Cold start -20 / -40 degrees
- Condensate evaporator
- Remote control
- External fuel tank connection
- Non-spillage frame (bunded)
- Towing eye, ball hitch
- Skid mounted version
- Customer's own paint colour and private labels



Thank you very much for your kind attention.

