

MINIMUM PRESSURE VALVE



OPERATION: Installed directly at the downstream from the air oil separator, the Minimum Pressure Valve provides two functions:

- At start-up, the valve stay closed up to the set opening pressure and then opens to maintain a minimum pressure in the air-oil separator assures pressure for lubricating the compressor.
- At shutdown, the check valve close to prevent back flow through the compressor.

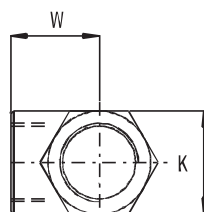
INSTALLATION: The Minimum Pressure Valve are installed at the outlet of the separator or in the discharge line after the separator. It can be connect by thread or flange.

REPLACEMENT: The stress on valve parts depends on compressor application and operating parameters. Inspect the valve and replace, using VMC spare part kit, after 8.000 operating hours.

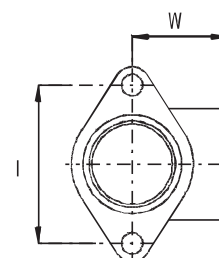
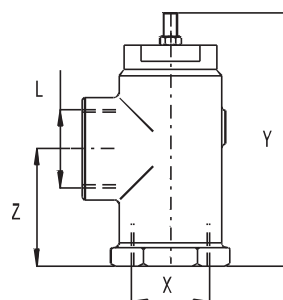
TECHNICAL DATA

THREAD TYPE		G10 1/2"	G10 3/4"	G25	G35	G40	G50	G55	G60	
Rate Flow fully open	m ³ /1'	1	1,5	3,5	6	12	22	40	60	
Pressure Drop	bar	From 0,03 to 0,2 Bar								
Materials		Housing in aluminium alloy anodized. Internal parts in stainless steel, viton sealings and brass								
Set opening Pressure	bar	From 3 to 5,5. Standard settings 4,5 ± 0,25								
X	Inch	Rp 1/2"	Rp 3/4"	Rp 1"	Rp1*1/4	Rp1*1/2	Rp2"	-	-	
Y	mm	86	86	102	128	190	276	281	328	
Z	mm	32	32	50	63	58	67,5	114,5	130	
L	mm	Rp 1/2"	Rp 3/4"	Rp 1"	Rp1*1/4	Rp1*1/2	Rp2"	Ø80	Ø90	
K	Es.	36	36	44	55	70	86	-	-	
W	mm	33	33	38	47	60	70,5	126	132	
Weight	Kg	0,28	0,28	0,53	0,95	2	3,2	7,5	8	

FLANGE TYPE			G25F	G35F	G40F	G50F			
X	mm	-	-	Ø30,5	Ø30,5	Ø50	46	Ø80	Ø82
Y	mm	-	-	-	-	199,5	-	-	-
Z	mm	-	-	42	49	75	67,5	114,5	-
L	mm	-	-	Rp 1"	Rp1*1/4	Ø40,3	Ø60	-	-
I (Inlet Flange)	mm	-	-	67	78	110	105	160	160
I (Outlet Flange)	mm	-	-	67	78	110	105	160	180
Flange Bores		-	-	2	2	4	4	8	8
Weight	Kg	0,28	0,28	0,6	1	3,2	3,2	7,5	8



THREAD



FLANGE